

Program-Wide Measures

Measure	Previous Results TY June 2015 % (N/D)	GOAL 2015-2016 & <u>Healthy People 2020</u> <u>Target</u> (HP 2020)	Current Results TY Sep 2015 % (N/D)
Cervical Cancer Screening: Percentage of women age 21-64 who are up to date on cervical cancer screening	54% (1191/2218)	<u>HP 2020 - 93%</u> 60%	52% (1128/2184)
Breast Cancer Screening: Percentage of women age 50-74 who have had a mammogram in the past two years	46% (396/860)	<u>HP 2020- 81.2%</u> 51%	44% (377/859)
Colon Cancer Screening: Percentage of patients age 50 to 75 with appropriate screening for colorectal cancer	34% (1364/4039)	<u>HP 2020- 70.5%</u> 40%	35% (1404/4029)
Tobacco Assessment and Intervention: Percentage of patients 18 and older who were screened for tobacco use one or more times in the past two years AND who received cessation counseling intervention if identified as a tobacco user	96% (8161/8510)	<u>HP 2020: Tobacco Screening- 68.6%</u> <u>Cessation Counseling- 21.1%</u> 98%	95% (8103/8495)
Adult Weight Screening and Follow-Up Percentage of patients 18 and older who had a calculated BMI in the past six months or during most recent visit AND if the most recent BMI is outside of normal parameters, a follow-up plan is documented.	74% (6820/9182)	80%	74% (6727/9143)
Depression Screening and Follow-up: Percentage of patients aged 12 and older screened for clinical depression using an age appropriate tool AND follow-up plan documented if depressed.	46% (3091/6705)	60%	50%* (3308/6681)

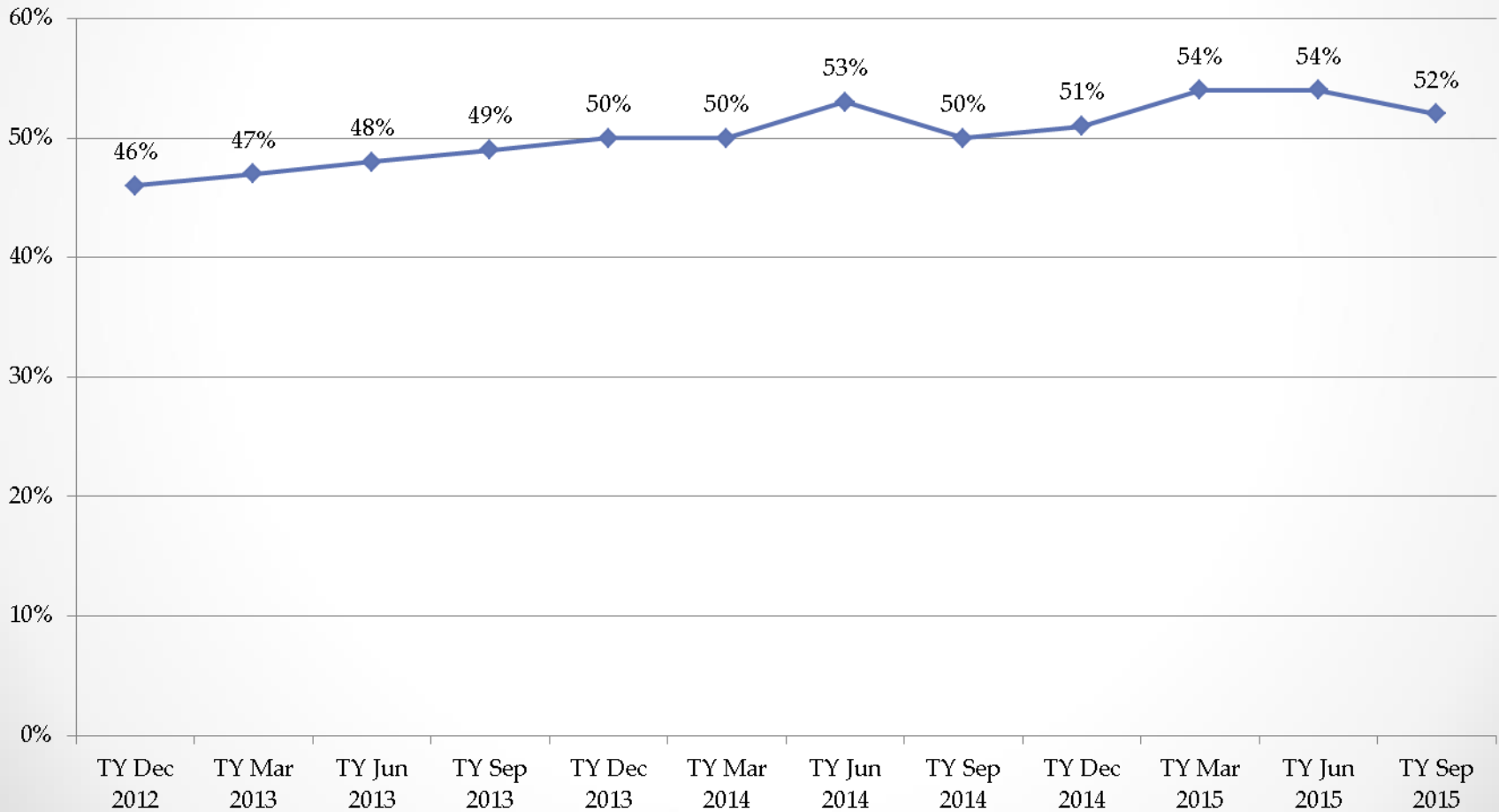
* difference in result is statistically significant

Program-Wide Measures

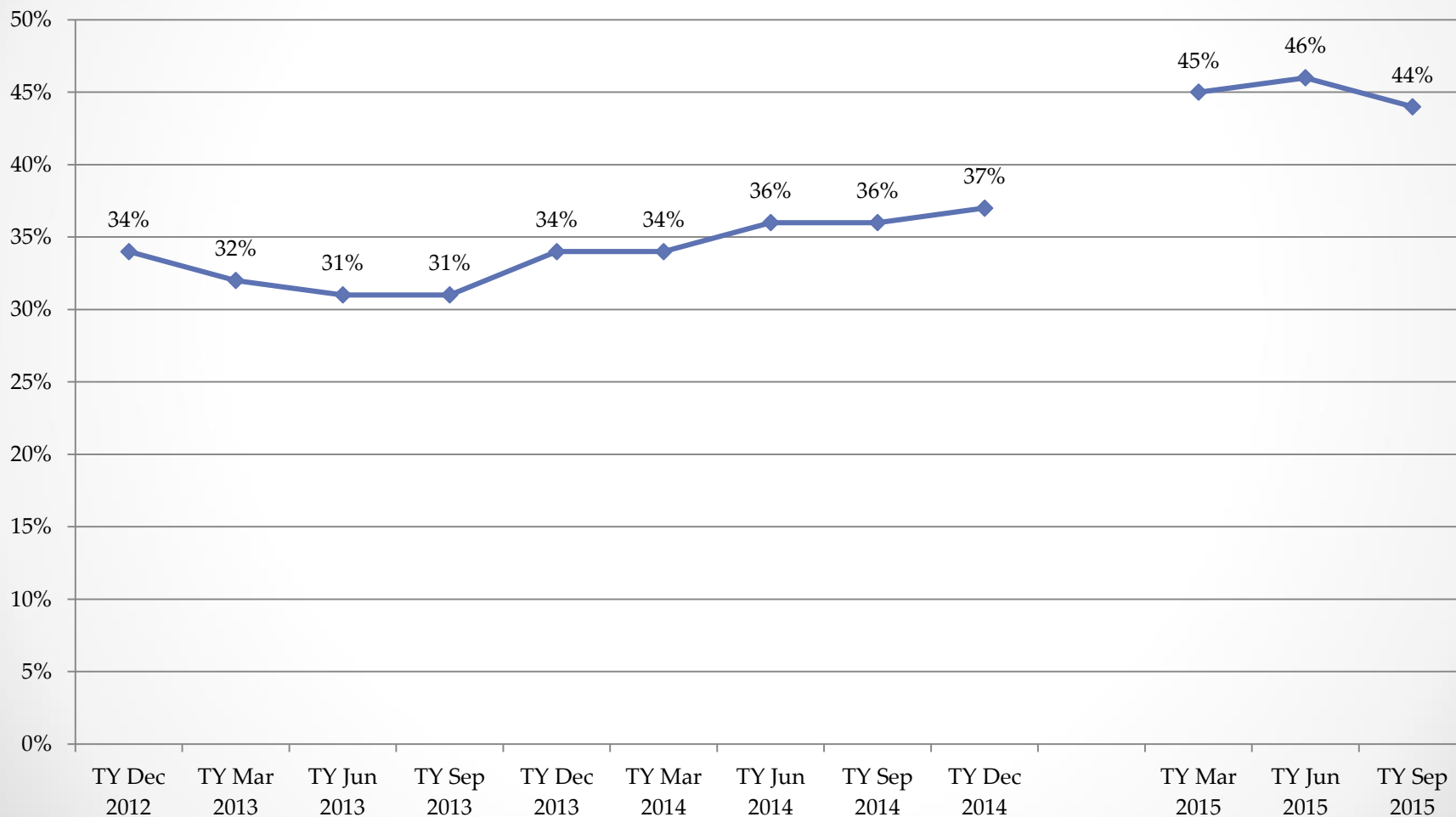
Measure	Previous Results TY June 2015 % (N/D)	GOAL 2015-2016 & <i>Healthy People</i> <i>2020 Target</i> <i>(HP 2020)</i>	Current Results TY Sep 2015 % (N/D)
Hypertension Control: Adult patients with a diagnosis of hypertension, seen at least twice in the last year, with most recent BP < 140/90	58% (1152/1985)	<u>HP 2020- 61.1%</u> 61%	57% (1142/1989)
Diabetes Control: Adults with a diagnosis of diabetes, seen at least twice in the last year with HgbA1C <9%	65% (687/1060)	<u>HP 2020- 84%</u> 70%	64% (679/1067)
Coronary Artery Disease: Lipid Therapy Percentage of patients with a diagnosis of CAD prescribed a lipid lowering agent	79% (205/260)	85%	77% (213/276)
Pharmacotherapy for Substance Use Disorder (SUD) <ul style="list-style-type: none"> Percentage of patients with diagnosis of Opioid Use Disorder (OUD) receiving a medication for opioid use disorder Percentage of patients with diagnosis of Alcohol Use Disorder (AUD) receiving a medication for alcohol use disorder 	29% (871/3021) 13% (332/2529)	35% 25%	32%* (957/2990) 14% (356/2484)
Counseling Regarding Psychosocial and Pharmacologic Treatment Options for SUD Percentage of patients with SUD counseled regarding psychosocial and pharmacologic treatment options	0%	35%	Not available
Naloxone Rescue Kits Percentage of patients with OUD or history of overdose or active prescription for an opioid who are prescribed or offered a naloxone rescue kit	16% (592/3721)	30%	18%* (673/3677)
Screening for Generalized Anxiety Disorder Percentage of patients 18 or older screened for generalized anxiety disorder using the GAD-2/7	0%	25%	31% (807/2648) 7/7/2015 to 9/30/2015

* difference in result is statistically significant

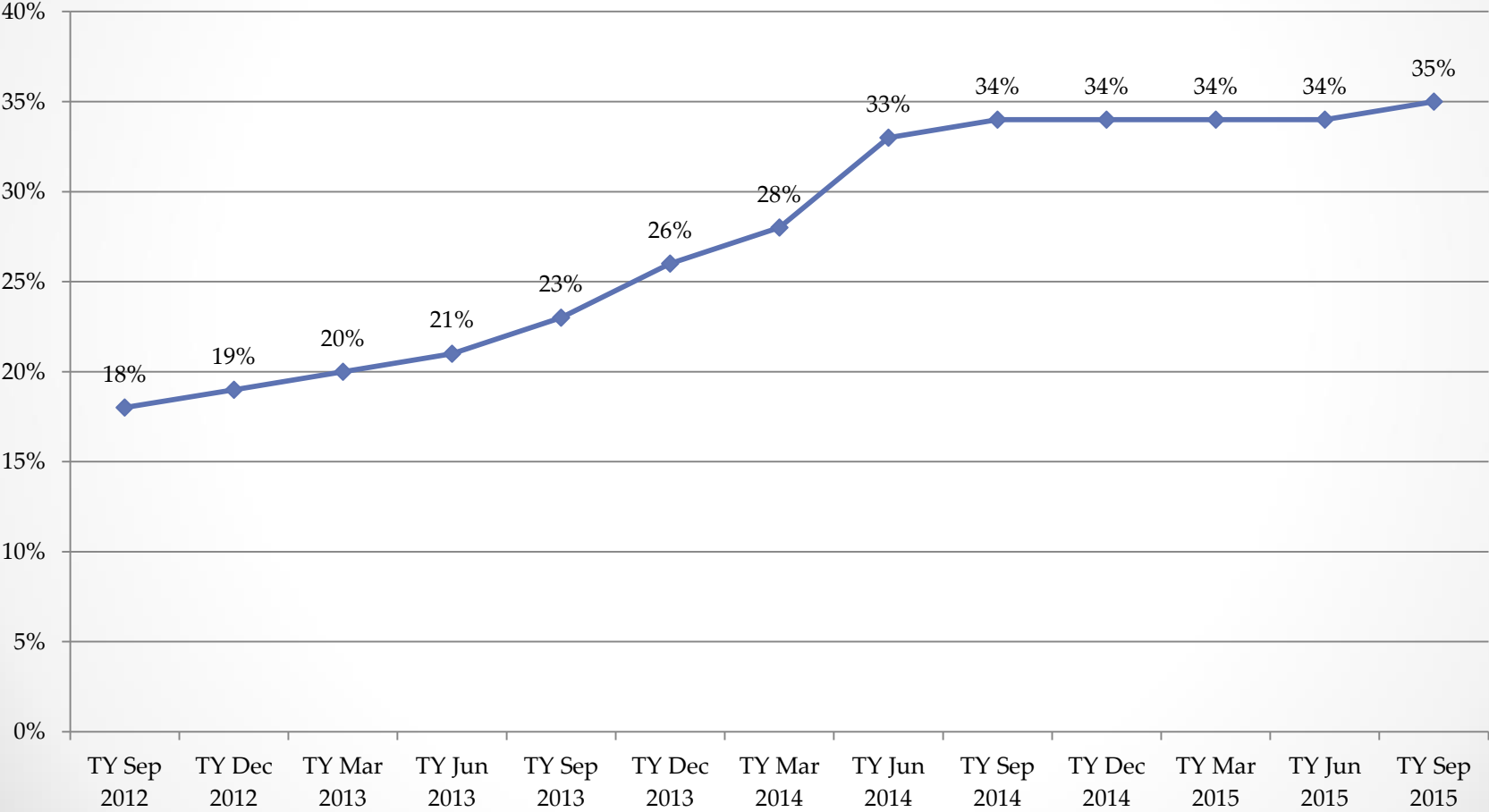
Cervical Cancer Screening Rate at BHCHP



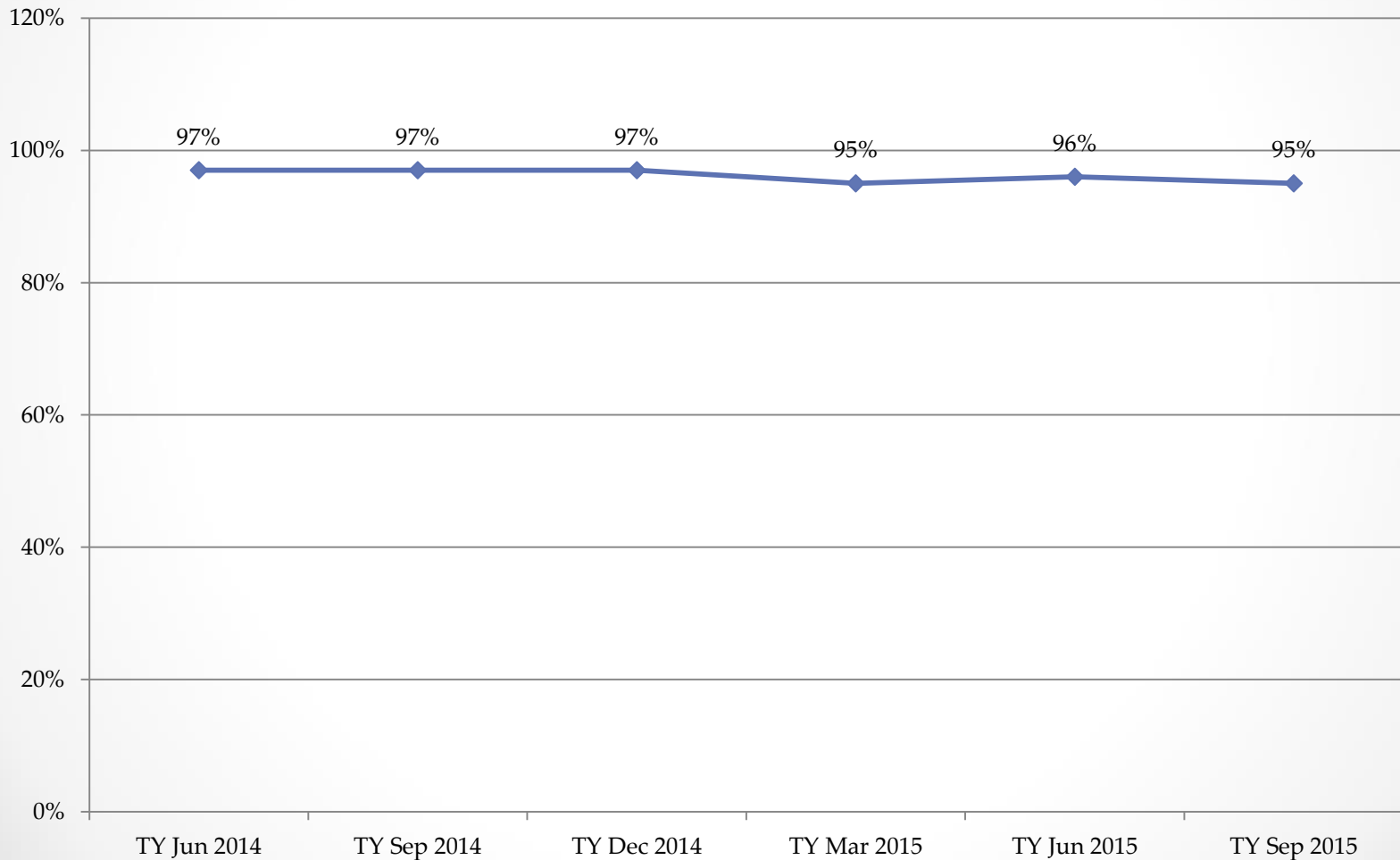
Breast Cancer Screening Rate at BHCHP



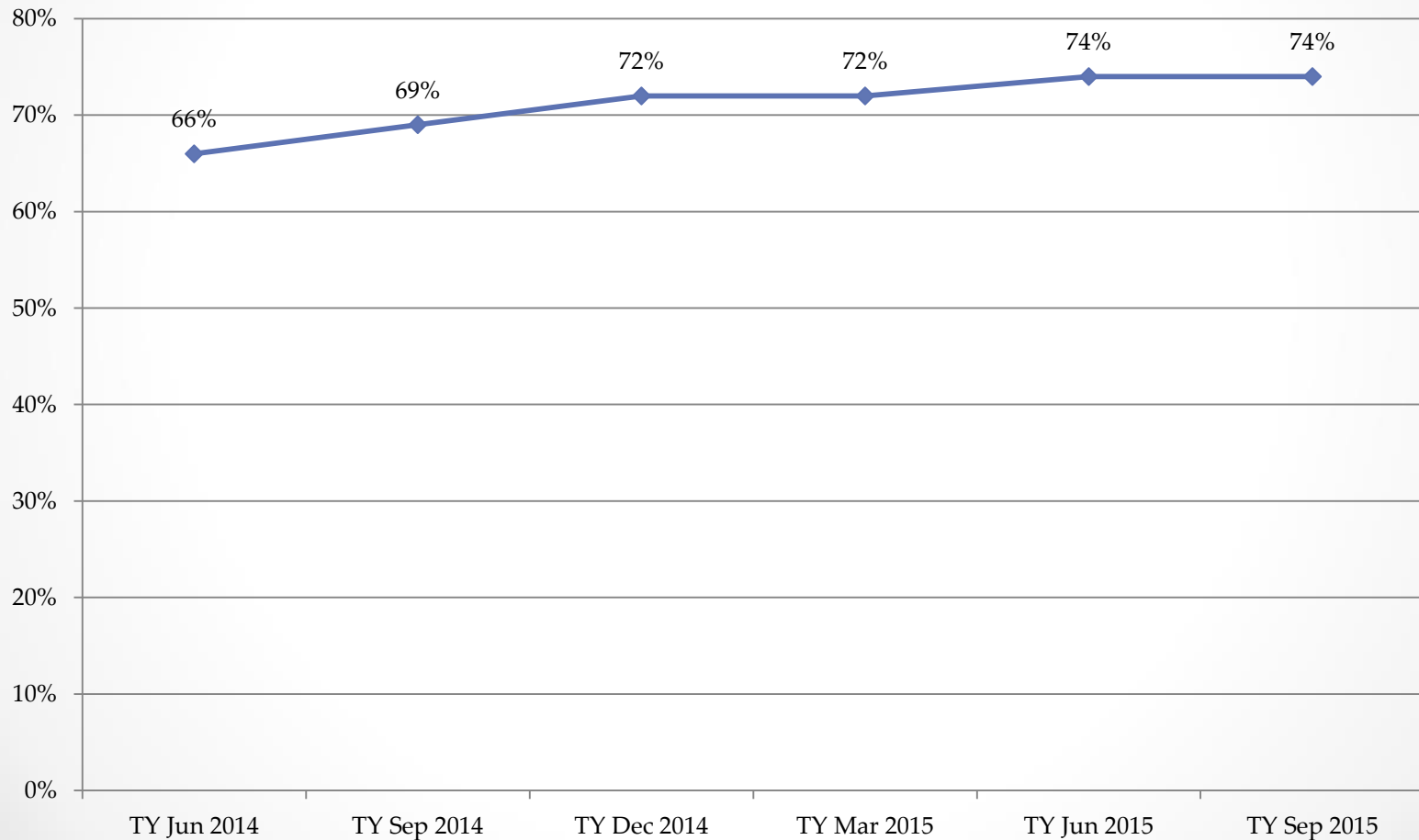
Colon Cancer Screening Rate at BHCHP



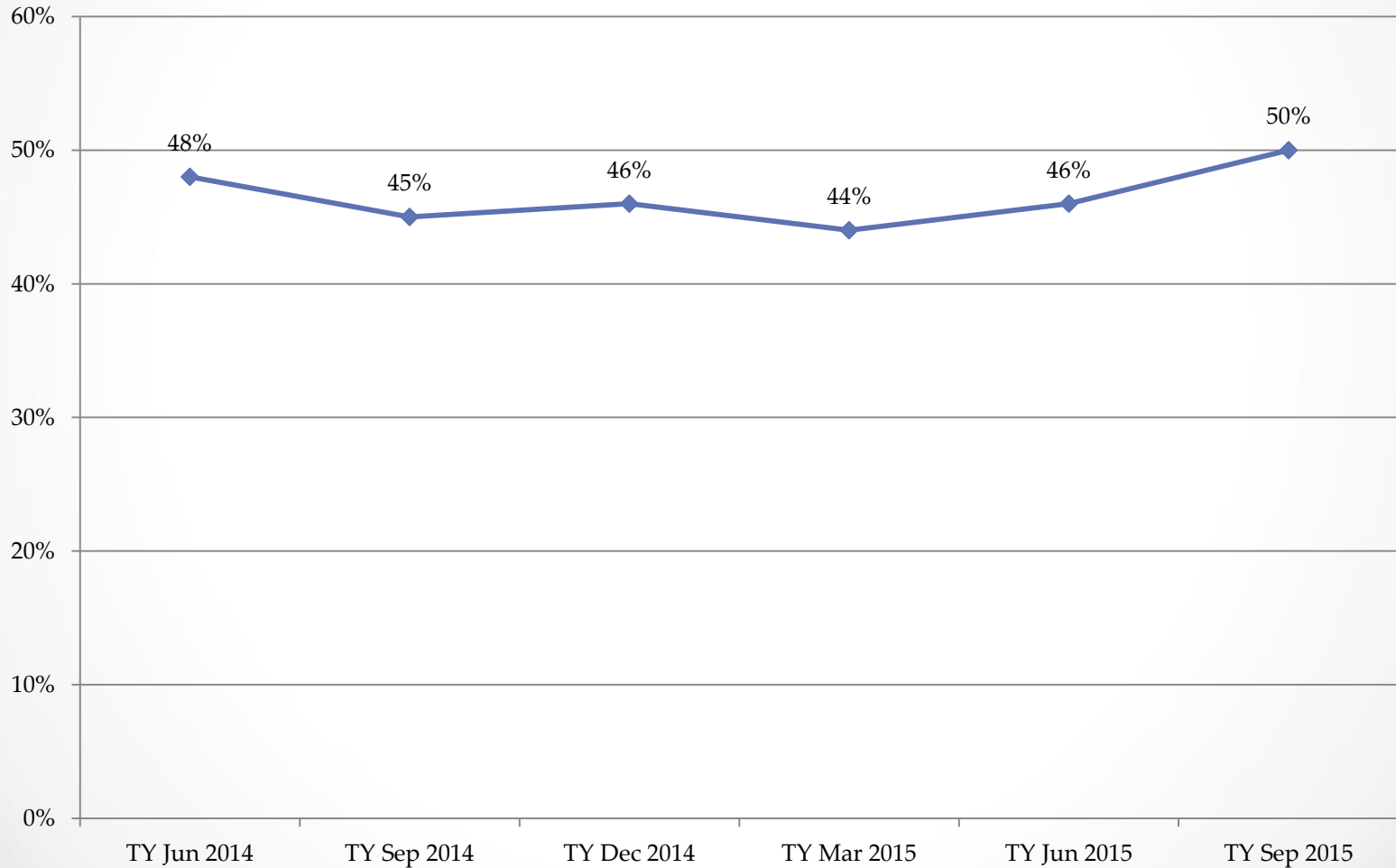
Tobacco Assessment and Intervention Rate at BHCHP



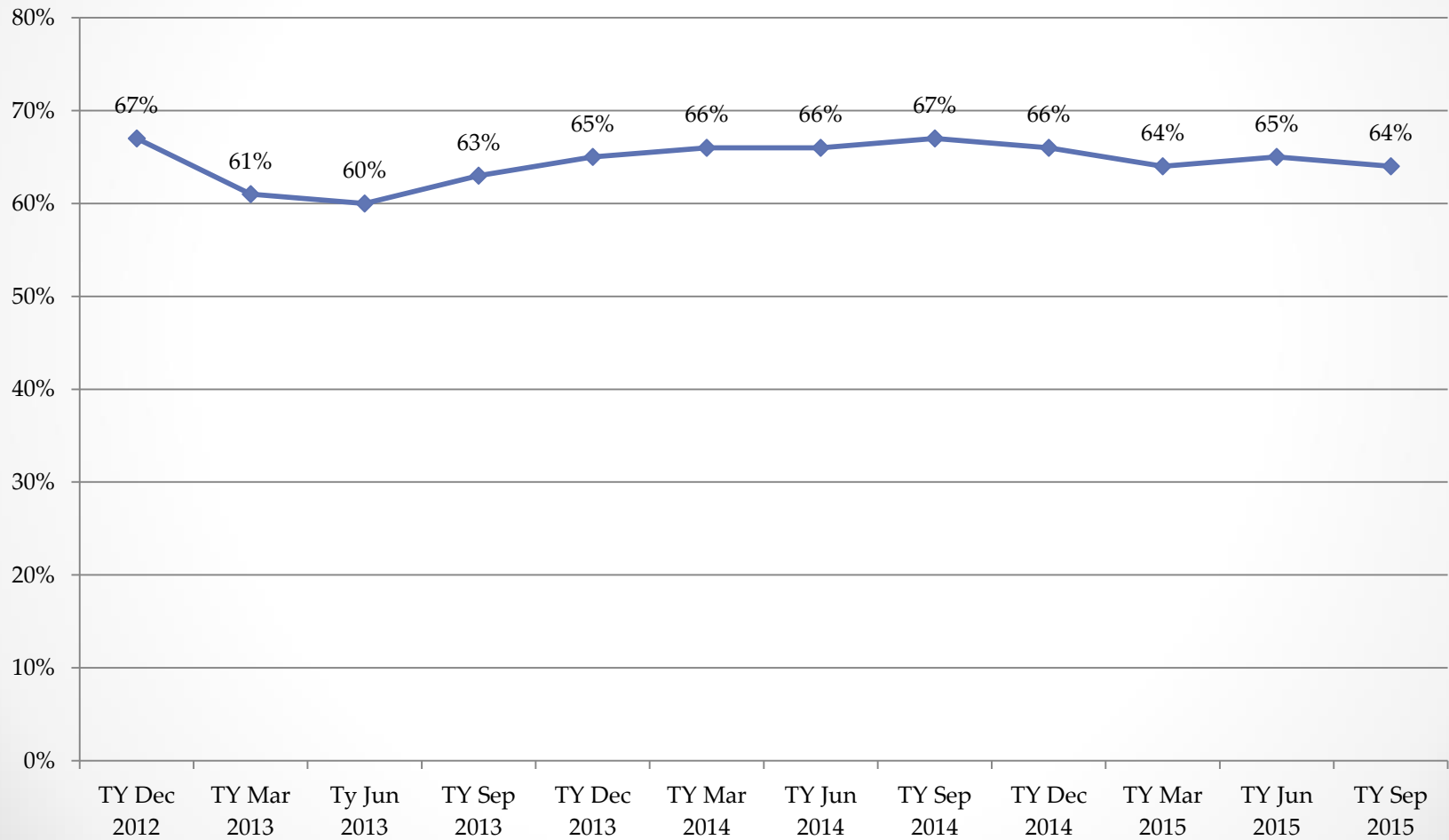
Adult Weight Screening & Follow-up Rate at BHCHP



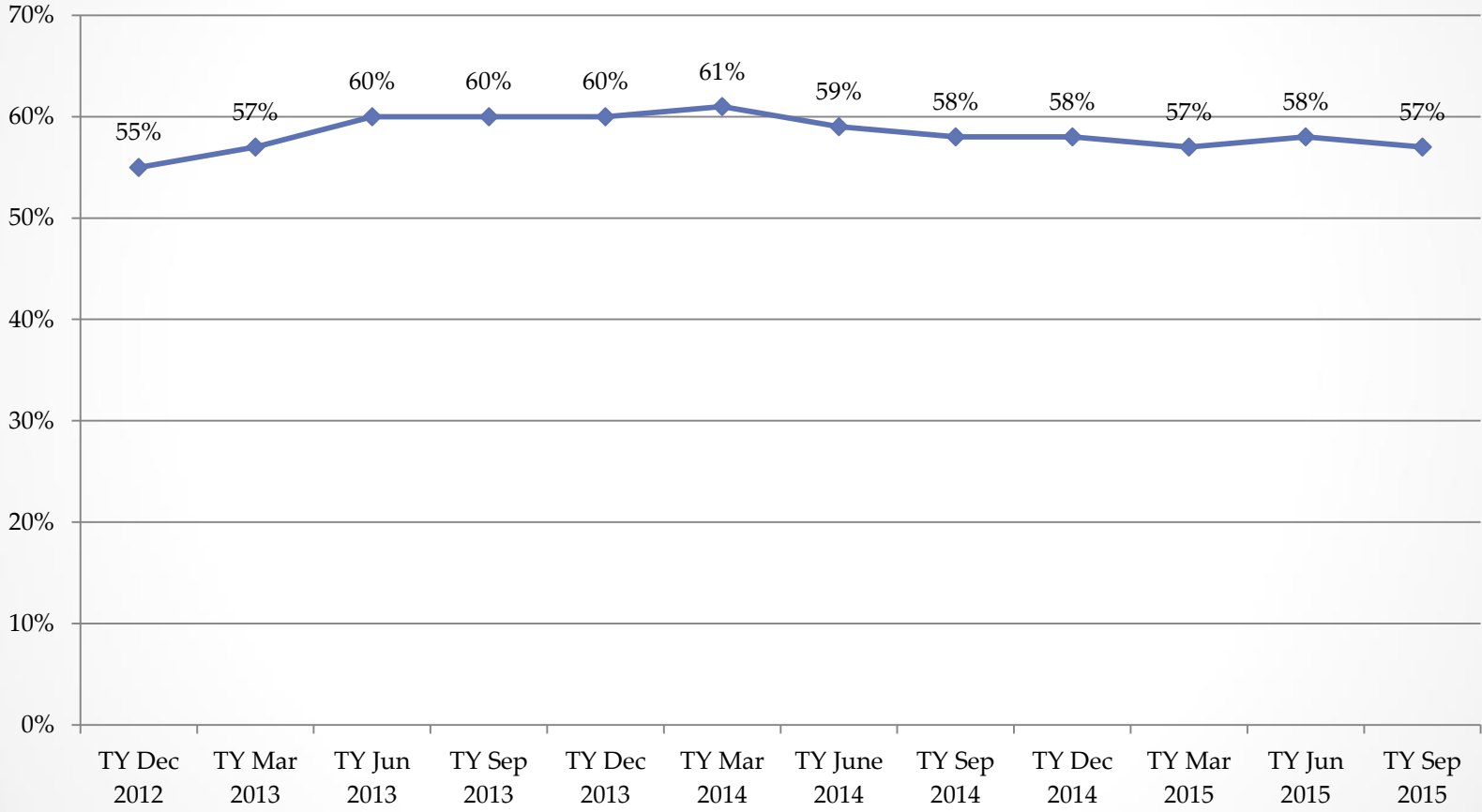
Depression Screening & Follow-Up Rate at BHCHP



Diabetics with A1C<9 Rate at BHCHP



Hypertensive Pts. with BP<140/90 at BHCHP



CAD patients on Lipid Therapy Rate at BHCHP

